



INDOFINE Chemical Company, Inc.

121 Stryker Lane, Bldg. 30, Suite 1 • Hillsborough, NJ 08844 • U.S.A.

Phone: (908) 359-6778 • FAX: (908) 359-1179

website: www.indofinechemical.com

e-mail: chemical@indofinechemical.com

CERTIFICATE OF ANALYSIS

Catalog number: 06-032

Product name: **SALICIN**
(Salicylalcohol glucoside)

Cas Number: [138-52-3]

Lot Number: 1909329

Chemical Formula: C₁₃H₁₈O₇

Molecular Weight: 286.28

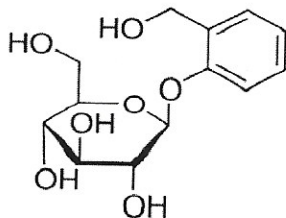
Appearance: White Powder

Loss on drying: 1.25%

Specific Rotation: -62.40°

Storage: Store in a cool, dry place

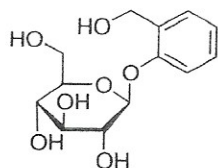
Purity(HPLC): 98.34%



Prepared by:
Ramesh Mandadi
Ramesh Mandadi
Director of Operations

Reviewed and Approved by:
Sujata Moton
Sujata Moton
VP

HPLC ANALYSIS



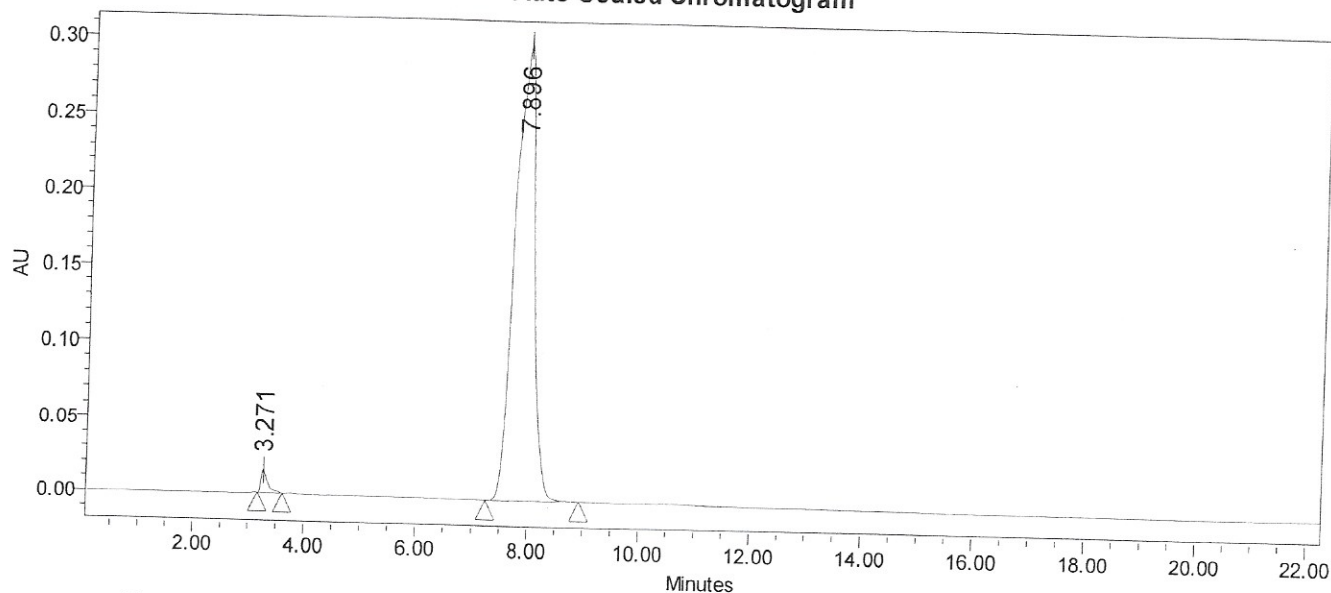
Catalog No.: 06-032
Product Name: Salicin
Lot No.: 1909329

SAMPLE INFORMATION

Sample Name: Salicin
Sample Type: Unknown
Vial: 2
Injection #: 1
Injection Volume: 10.00 uL
Run Time: 30.0 Minutes

Acquired By: System
Sample Set Name:
Acq. Method Set: Salicin
Processing Method: Salicin
Channel Name: 215.0nm
Proc. Chnl. Descr.: PDA215.0 nm

Auto-Scaled Chromatogram



Peak Results

Name	RT	Area	Height	% Area
1	3.271	127983	15500	1.66
2	7.896	7592613	301356	98.34

Mobile phase A: Methanol 25

Mobile phase B: 0.03% H₃PO₄ Water 75

Flow rate: 0.8 ml/min

Column temp: 30°

Chromatographic column: Kromasil C18 250*4.6 5um

Prepared by:

Ramesh Mandadi

Ramesh Mandadi

Director of Operations

Reviewed and Approved by:

Sujata Moton

Sujata Moton

VP